

SHOW YOUR STUDENTS WHY YOUR CLASS MATTERS



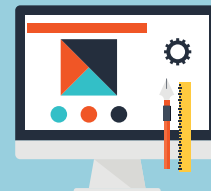
WHAT IS SIGN MANUFACTURING DAY?



As an educator, you find encouragement in seeing your students excitement as they experience how they can put the skills you teach them into action.



Students get an opportunity to ask potential employers real-life questions about the profession (welding, design, etc.) and the sign, graphics and visual communications industry.



Local businesses in the sign and graphics industry will open their doors to your students for business tours to show them first-hand how their skills lead to a diverse and in-demand career path.

TOP THREE REASONS TO PARTICIPATE IN SIGN MANUFACTURING DAY:

1

JOIN THE MOMENTUM:

BEFORE THE BUSINESS TOUR:
35% of students considered a career in manufacturing

35%

74%

AFTER THE BUSINESS TOUR:
74% considered a career in manufacturing

WE'RE INTERESTED!

2

GET STUDENTS HIRED:

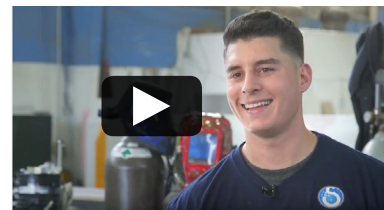
In previous years, participating companies have used the day to hire entry-level workers, develop co-op and internship programs and make valuable connections with local technical and community college instructors.



3

CATCH THEIR ATTENTION:

Share this video with your students to connect the dots between their skills and talents with a career in the sign and graphics industry. www.signs.org/alfonso



SIGN UP!

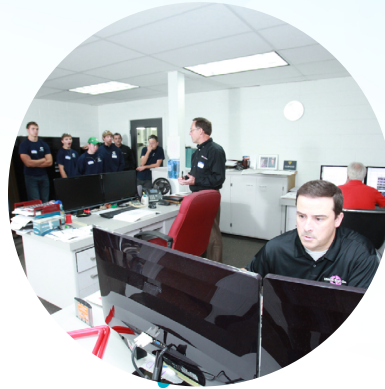
Get in touch with workforce@signs.org to register your school for 2018!

IN PARTNERSHIP WITH
THE NATIONAL ASSOCIATION
OF MANUFACTURERS

www.signs.org/mfgday
www.mfgday.com

LINK THE CLASSROOM TO THE REAL WORLD

Show your students the connection between in-classroom learning and the real-world careers available in the sign and graphics industry. Here are just a few examples of how your class translates into a solid job for your students.



THESE ARE ONLY SOME OF THE SKILLS NEEDED
IN THE FABRICATION AND INSTALLATION OF SIGNS!

WELDING ELECTRONICS
VISUAL COMMUNICATIONS PRECISION MACHINING
MULTIMEDIA DESIGN CAD

GET
IN
TOUCH!

GET IN TOUCH! Visit www.signs.org/careers.
For questions and additional career opportunities,
get in touch with workforce@signs.org.